



# INDOFINE Chemical Company, Inc.

121 Stryker Lane, Bldg. 30, Suite 1 • Hillsborough, NJ 08844 • U.S.A.

Phone: (908) 359-6778 • FAX: (908) 359-1179

website: [www.indofinechemical.com](http://www.indofinechemical.com)

e-mail: [chemical@indofinechemical.com](mailto:chemical@indofinechemical.com)

## CERTIFICATE OF ANALYSIS

Catalog number: 021130S

Product name: **NARIRUTIN with HPLC**  
(Naringenin-7-O-rutinoside; Isonaringin)

CAS Number: [14259-46-2]

Lot Number: 1912370

Chemical Formula: C<sub>27</sub>H<sub>32</sub>O<sub>14</sub>

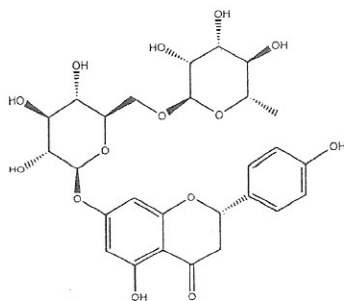
Molecular Weight: 580.54

Appearance: Off-white powder

Water Content: 2.84%

Storage: Store in cool, dry place. Protect from light.  
Keep package airproofed when not in use.

Purity(HPLC): 99.32%



Prepared by:  
*Ramesh Mandadi*  
Ramesh Mandadi  
Director of Operations

Reviewed and Approved by:  
*Sujata Moton*  
Sujata Moton  
VP



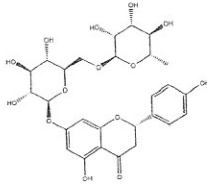
# INDOFINE Chemical Company, Inc.

121 Stryker Lane, Bldg. 30, Suite 1 • Hillsborough, NJ 08844 • U.S.A.

Phone: (908) 359-6778 • FAX: (908) 359-1179

website: [www.indofinechemical.com](http://www.indofinechemical.com)

e-mail: [chemical@indofinechemical.com](mailto:chemical@indofinechemical.com)



## HPLC ANALYSIS

Catalog No.: 021130S

Product Name: Narirutin

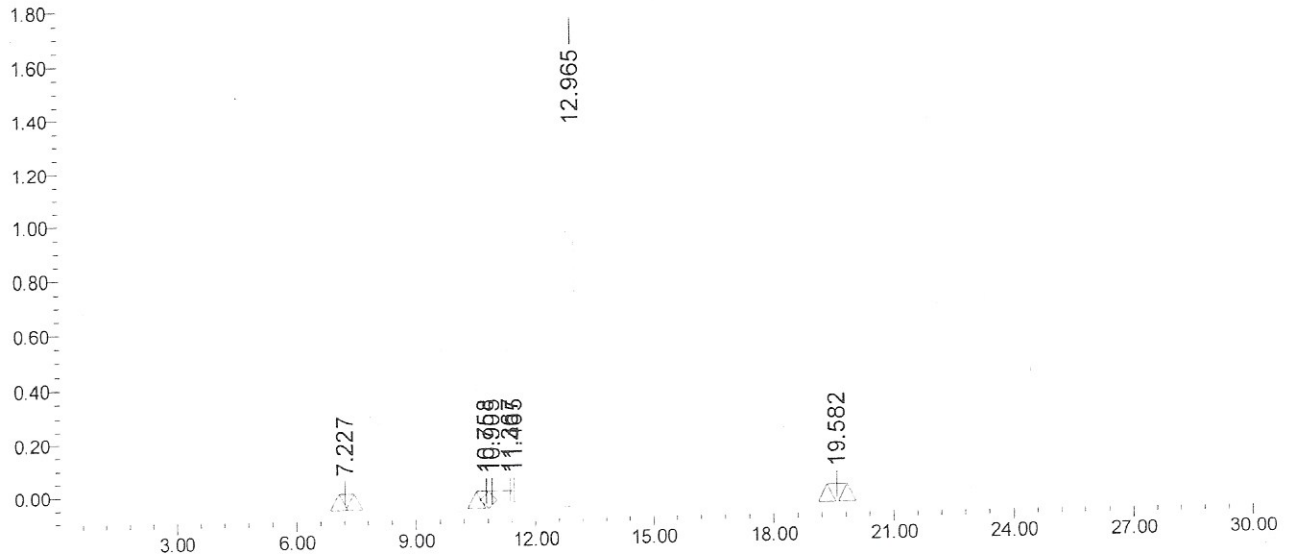
Lot No.: 1912370

### SAMPLE INFORMATION

Sample Name: Narirutin  
Sample Type:  
Vial: 47  
Injection #: 1  
Injection Volume: 10.00 ul  
Run Time: 30.0 Minutes

Acquired By: prf01  
Sample Set Name:  
Acq. Method Set: Narirutin  
Processing Method: sample  
Channel Name: 284.0  
Proc. Chnl. Descr.: PDA 284.0

### Auto-Scaled Chromatogram



### Peak Results

	RT	Area	% Area	USP	USP
1	7.227	9465	0.07	1069	18156.58
2	10.758	12446	0.09	1889	40813.58
3	10.905	12431	0.09	1723	29887.31
4	11.367	14245	0.11	2023	
5	11.465	12218	0.09	2044	
6	12.965	13208795	99.32	1703858	65132.13
7	19.582	29812	0.22	2150	45969.20

Prepared by:

Ramesh Mandadi

Ramesh Mandadi

Director of Operations

Reviewed and Approved by:

Sujata Moton

Sujata Moton

VP